



**India Meteorological Department
(Ministry of Earth Sciences)**

NATIONAL BULLETIN NO. 14 (BOB/05/2023)

TIME OF ISSUE: 2000 HOURS IST

DATED: 17.11.2023

FROM: INDIA METEOROLOGICAL DEPARTMENT (FAX NO. 24643965/24699216/24623220)

TO: CONTROL ROOM, NDM, MINISTRY OF HOME AFFAIRS (FAX.NO. 23093750)

CONTROL ROOM NDMA (FAX.NO. 26701729)

CABINET SECRETARIAT (FAX.NO.23012284, 23018638)

PS TO HON'BLE MINISTER FOR S & T AND EARTH SCIENCES (FAX NO.23316745)

SECRETARY, MOES (FAX NO. 24629777)

H.Q. (INTEGRATED DEFENCE STAFF AND CDS) (FAX NO. 23005137/23005147)

DIRECTOR GENERAL, DOORDARSHAN (23385843)

DIRECTOR GENERAL, AIR (23421105, 23421219)

PIB MOES (FAX NO. 23389042)

UNI (FAX NO. 23355841)

D.G. NATIONAL DISASTER RESPONSE FORCE (NDRF) (FAX NO. 26105912, 2436 3260)

DIRECTOR, PUNCTUALITY, INDIAN RAILWAYS (FAX NO. 23388503)

CHIEF SECRETARY, ODISHA (FAX NO. 0674-2536660)

CHIEF SECRETARY, WEST BENGAL (FAX NO. 033-22144328)

CHIEF SECRETARY, ANDHRA PRADESH (FAX NO. 0863-2441029, 08645-246600)

CHIEF SECRETARY, TAMIL NADU (FAX NO 044-25672304)

CHIEF SECRETARY, PUDUCHERRY (FAX NO 0413-2334145)

ADMINISTRATOR, ANDAMAN & NICOBAR ISLANDS (FAX NO. 03192- 232656)

CHIEF SECRETARY, GOVT. OF TRIPURA (FAX NO. 0381-2414013, 2413200)

CHIEF SECRETARY, GOVT. OF MIZORAM (FAX NO. 0389-2322745, 2320588)

CHIEF SECRETARY, GOVT. OF MANIPUR (FAX NO. 0385-2452629)

CHIEF SECRETARY, GOVT. OF NAGALAND (FAX NO. 0370-2270057)

CHIEF SECRETARY, GOVT. OF ASSAM (FAX NO. 0361-2260900)

CHIEF SECRETARY, GOVT. OF MEGHALAYA (FAX NO. 0364-2225978)

Sub: Cyclonic Storm “Midhili” (pronounced as “Midhili”) crossed Bangladesh coast near Khepupara

The Cyclonic Storm “**Midhili**” (pronounced as “**Midhili**”) over Northeast and adjoining Northwest Bay of Bengal close to Bangladesh coast moved north-northeastwards with a speed of 37 kmph and crossed Bangladesh coast near Khepupara during 1430-1530 hrs IST. It then continued to move north-northeastwards across the Islands of Bangladesh as a Cyclonic Storm with maximum sustained surface wind speed of 65-75 kmph gusting to 85 kmph and lay centered at 1730 hours IST of today, the 17th November over Coastal Bangladesh near latitude 22.8°N and longitude 90.8°E about 20 km east-northeast of Bhola, 30 km west-southwest of Majdicourt, 110 km northeast of Khepupara and 120 km southwest of Chittagong (Bangladesh).

It is likely to move north-northeastwards and weaken into a Deep Depression over Tripura and adjoining Bangladesh during next 06 hours and into a Depression over south Assam & adjoining Mizoram-Tripura during subsequent 06 hours.

Forecast track and intensity are given below:

Date/Time (IST)	Position (Lat. °N/ long. °E)	Maximum sustained surface wind speed (Kmph)	Category of cyclonic disturbance
17.11.23/1730	22.8/90.8	60-70 kmph gusting to 80 kmph	Cyclonic Storm
17.11.23/2330	23.6/91.6	50-60 kmph gusting to 70 kmph	Deep Depression
18.11.23/0530	24.3/92.4	40-50 kmph gusting to 60 kmph	Depression

Warnings:

(i) Rainfall Warning (graphics enclosed):

- Light to moderate rainfall at most places with isolated heavy to very heavy rainfall is likely over Nagaland, Manipur, Mizoram & Tripura on 17th & 18th November with **extremely heavy rainfall at isolated places over Mizoram & Tripura on 17th November.**
- Light to moderate rainfall at many places with isolated heavy rainfall is likely over south Assam and east Meghalaya on 17th & 18th November.

(ii) Wind warning (graphics enclosed):

- **Northeast adjoining Northwest Bay of Bengal and along & off Bangladesh coast: Gale wind** speed reaching **60-70 kmph gusting to 80 kmph** is prevailing and would decrease gradually thereafter becoming **50-60 kmph gusting to 70 kmph** from 17th midnight. It would decrease further becoming **Squally wind** speed reaching **40-50 kmph gusting to 60 kmph** by morning of 18th November and would decrease thereafter.
- **Along & off West Bengal Coast: Squally wind** speed reaching **35-45 kmph gusting to 55 kmph** is prevailing and would continue till night of 17th and decrease thereafter.
- **Strong wind** speed reaching **40-50 kmph gusting to 60 kmph** is likely over Tripura, Mizoram, Manipur and south Assam till 18th November evening.

(iii) Sea Condition:

- **High** sea condition is prevailing over Northeast adjoining Northwest Bay of Bengal and along & off Bangladesh coast and is likely to become **very rough to rough** from midnight of 17th till morning of 18th November and improve thereafter.
- **Rough to very rough** sea condition is likely along & off West Bengal coast till midnight of 17th November.

(iv) Fishermen Warning:

Fishermen are advised not to venture into

- Northeast adjoining Northwest Bay of Bengal and along & off Bangladesh coast till morning of 18th November.
- Along & off West Bengal coast till 17th November midnight.

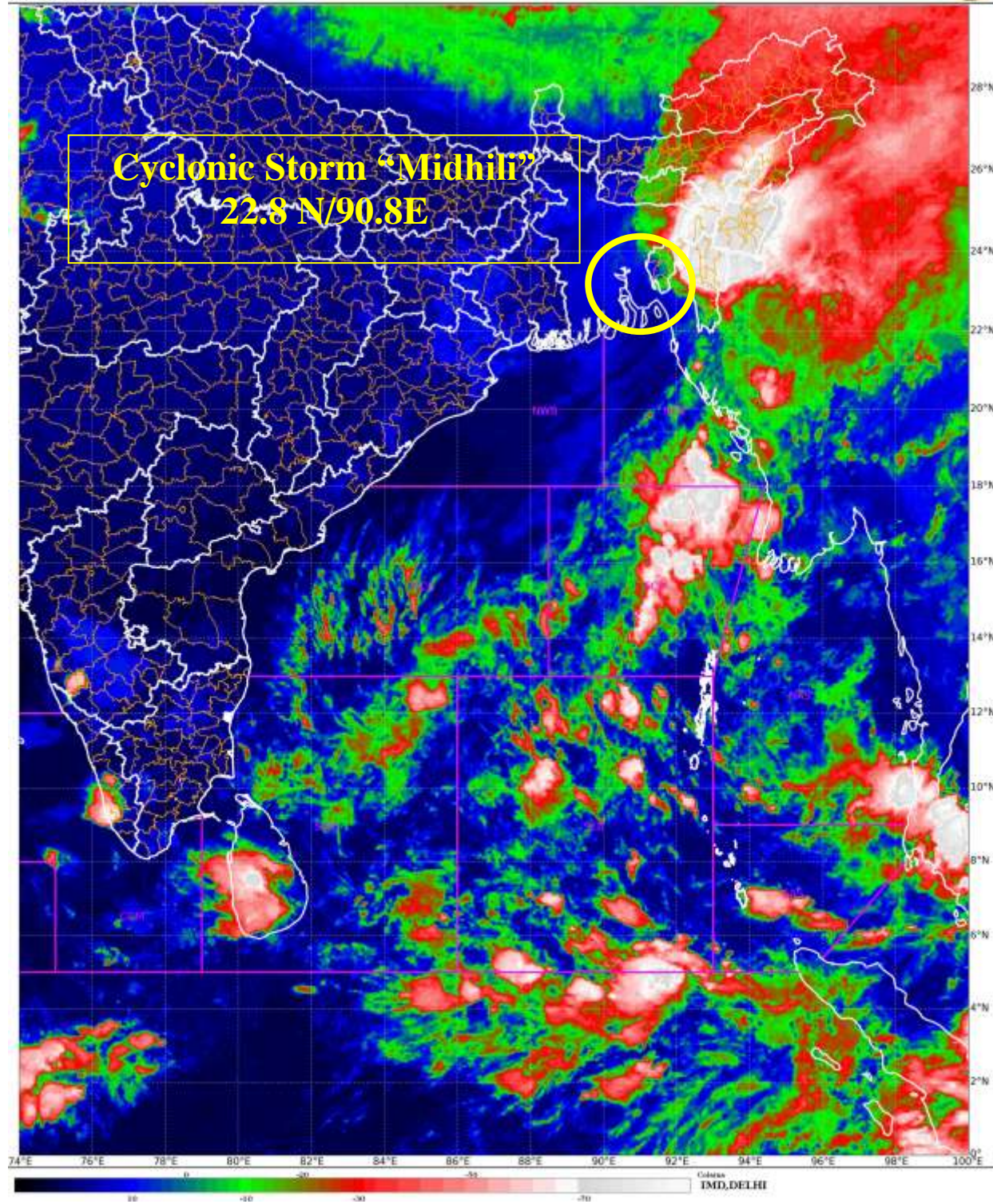
(v) Damage Expected & Action Suggested for Mizoram-Tripura adjoining south Assam during next 12 hours:

- Damage to thatched huts and loose/unsecured structures..
- Minor damage to power and communication lines due to breaking of branches.
- Minor damage to Kutcha Roads.
- Some damage to paddy crops, banana, papaya & drumstick trees and orchards.
- Inundation in low lying areas.

The system is under continuous surveillance and the next message will be issued at 2330 hours IST of today, the 17th November, 2023.

(Ananda Kumar Das)
Scientist F, Cyclone Warning, New Delhi

Copy to: ACWC Chennai/ ACWC Kolkata/CWC Bhubaneswar/CWC Vishakhapatnam/MC Amravati/ RMC Guwahati/MC Agartala/MC Mizoram/MC Manipur/MC Nagaland/MC Shillong





OBSERVED AND FORECAST TRACK AND INTENSITY ALONGWITH CONE OF UNCERTAINTY IN ASSOCIATION WITH CYCLONIC STORM MIDHILI OVER COASTAL BANGLADESH BASED ON 1200 UTC (1730 HRS IST) OF 17TH NOVEMBER 2023.



DATE/TIME IN UTC
IST=UTC + 0530

L: LOW PRESSURE AREA

WML: WELL MARKED LOW PRESSURE AREA

D: DEPRESSION (17-27 KT)

DD: DEEP DEPRESSION (28-33 KT)

CS: CYCLONIC STORM (34-47 KT)

SCS: SEVERE CYCLONIC STORM (48-63KT)

VSCS: VERY SEVERE CYCLONIC STORM (64-89 KT)

● LESS THAN 34 KT

⊙ 34-47 KT

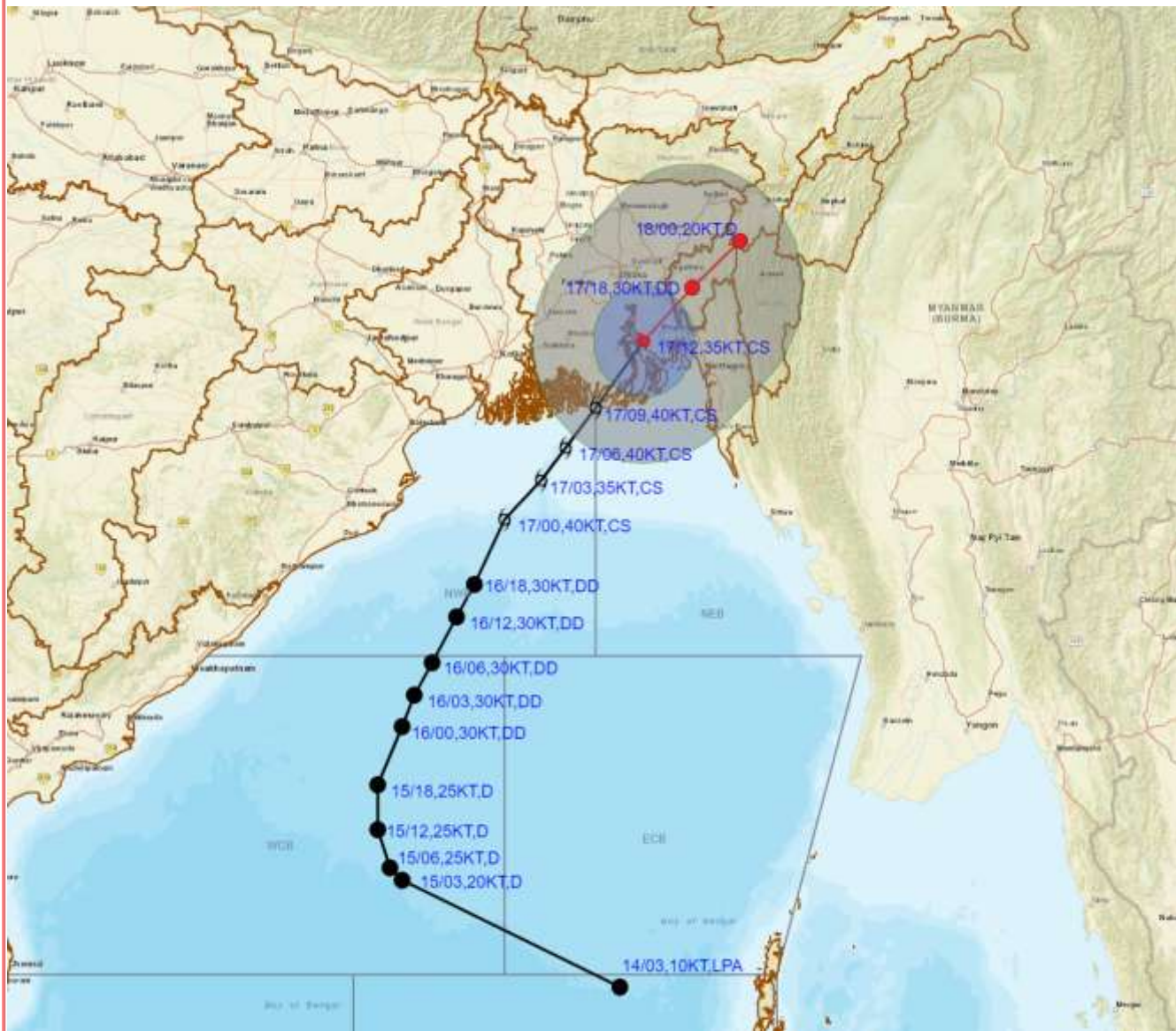
⊙ ≥ 48 KT

— OBSERVED TRACK

— FORECAST TRACK



OBSERVED AND FORECAST TRACK AND INTENSITY ALONG WITH QUADRANT WIND DISTRIBUTION IN ASSOCIATION WITH CYCLONIC STORM MIDHILI OVER COASTAL BANGLADESH BASED ON 1200 UTC (1730 HRS IST) OF 17TH NOVEMBER 2023.



DATE/TIME IN UTC
IST=UTC + 0530

L: LOW PRESSURE AREA

WML: WELL MARKED LOW PRESSURE AREA

D: DEPRESSION (17-27 KT)

DD: DEEP DEPRESSION (28-33 KT)

CS: CYCLONIC STORM (34-47 KT)

SCS: SEVERE CYCLONIC STORM (48-63KT)

VSCS: VERY SEVERE CYCLONIC STORM (64-89 KT)

ESCS: EXTREMELY SEVERE CYCLONIC STORM (90-119 KT)

SuCS: SUPER CYCLONIC STORM (≥ 120 KT)

● LESS THAN 34 KT

○ 34-47 KT

● ≥ 48 KT

— OBSERVED TRACK

— FORECAST TRACK

— CONE OF UNCERTAINTY

AREA OF MAXIMUM SUSTAINED WIND SPEED:

■ 28-33 KT (52-61 KMPH)

■ 34-49 KT (62-91 KMPH)

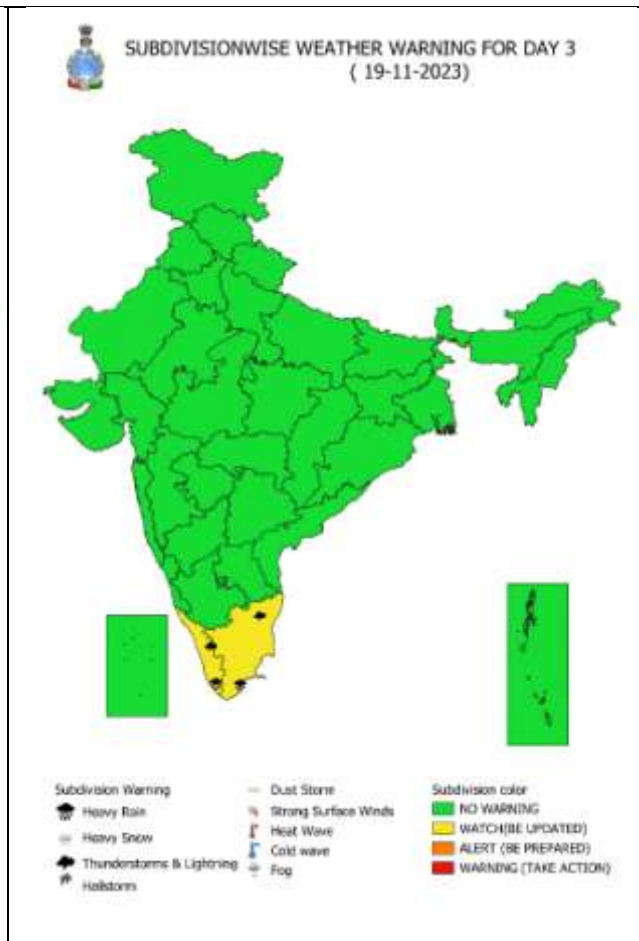
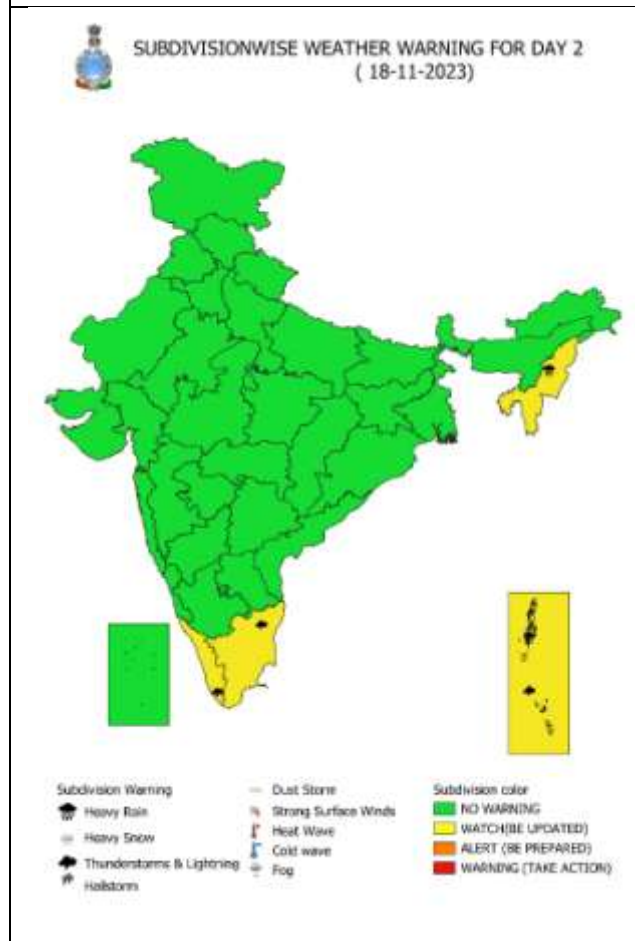
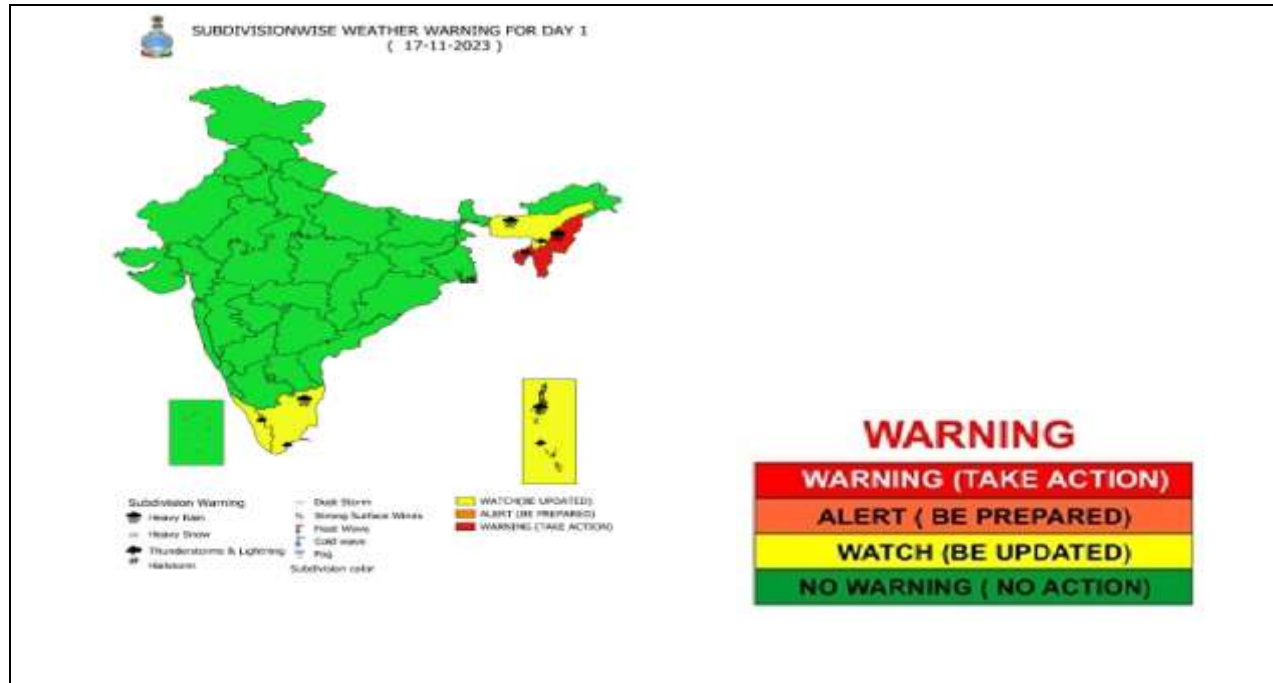
■ 50-63 KT (92-117 KMPH)

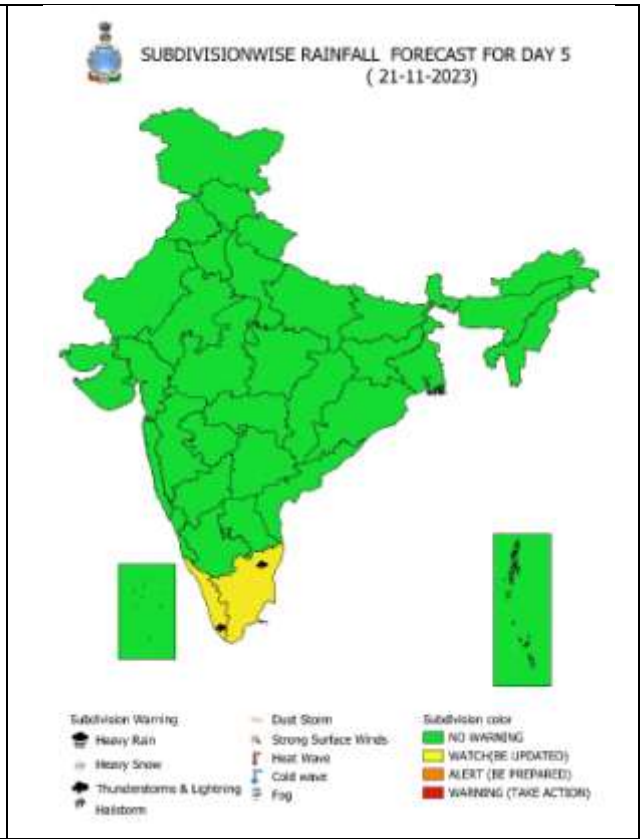
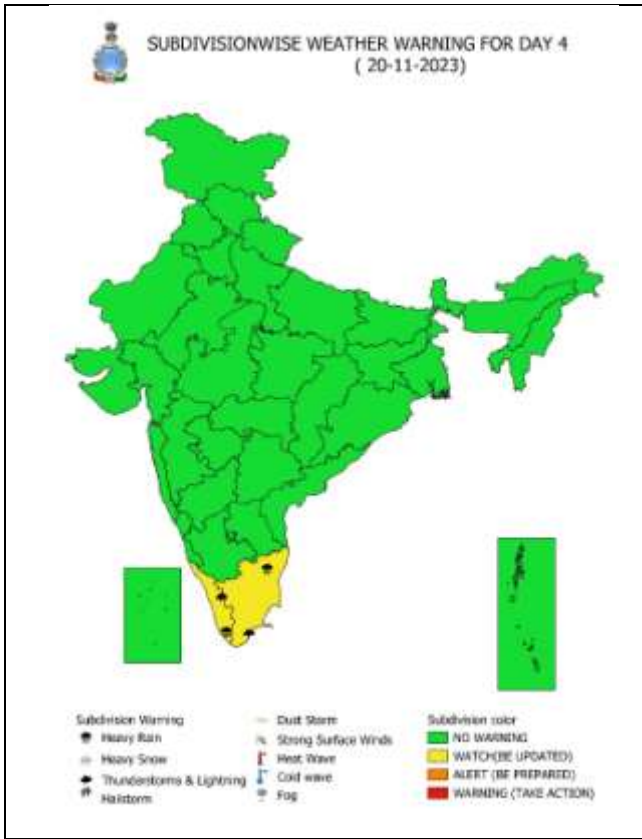
■ ≥ 64 KT (≥ 118 KMPH)

IMPACT OVER THE SEA

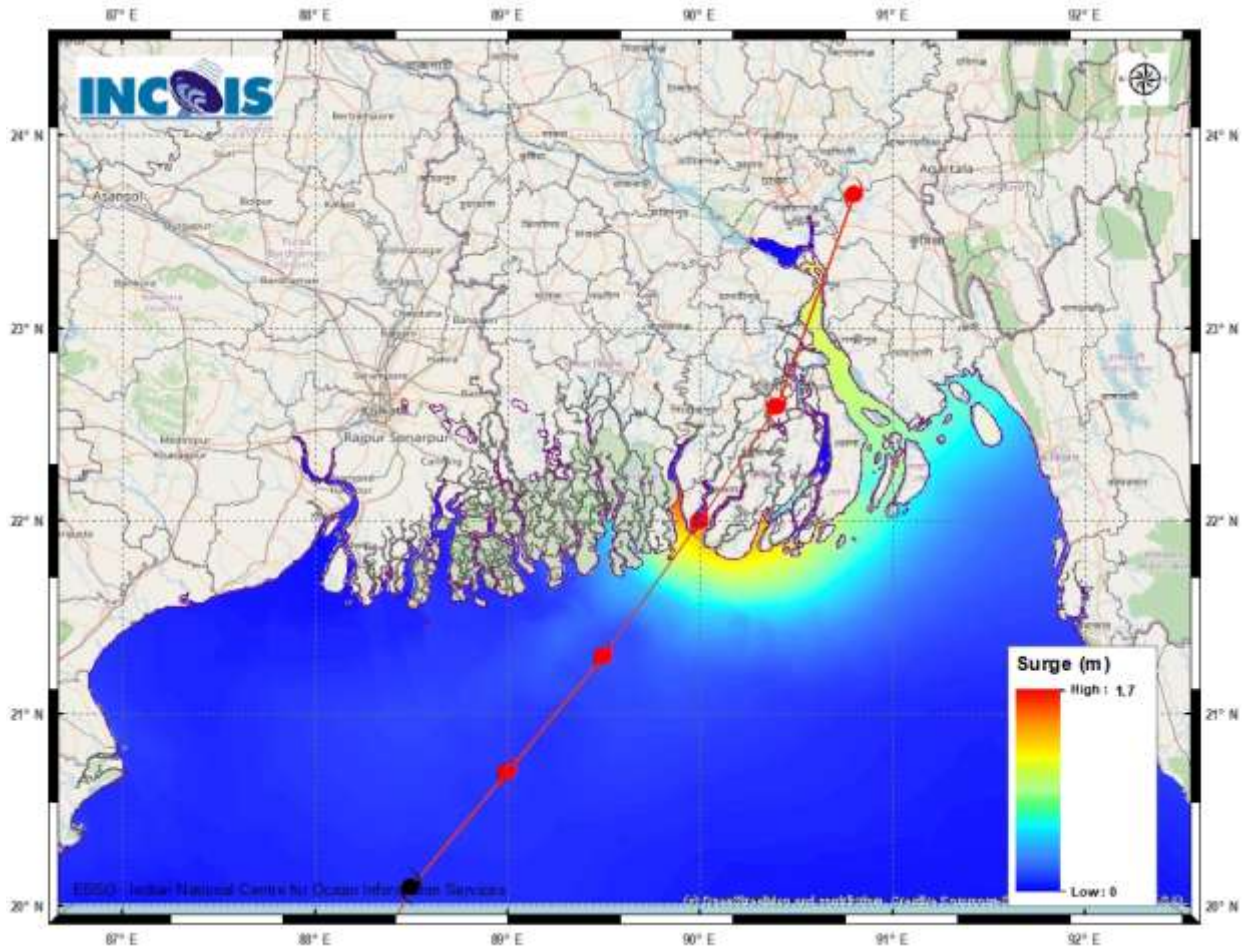
MSW (knot/kmph)	Impact	Action
28-33 (52-61)	Very rough seas	Total suspension of fishing operations
34-49 (62-91)	High to very high seas	Total suspension of fishing operations
50-63 (92-117)	Very high seas	Total suspension of fishing operations
≥ 64 (≥ 118)	Phenomenal	Total suspension of fishing operations

WEATHER WARNING GRAPHICS





STORM SURGE GUIDANCE

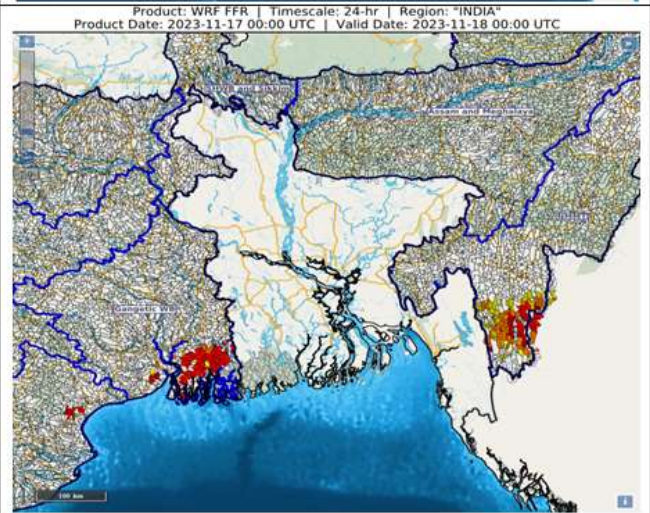


FLASH FLOOD GUIDANCE

24 hours Outlook for the Flash Flood Risk (FFR) till 0530 IST of 18-11-2023 :

Moderate flash flood risk likely over few watersheds & neighbourhoods of NMMT and Gangetic West Bengal Met Sub-divisions during next 24 hours.

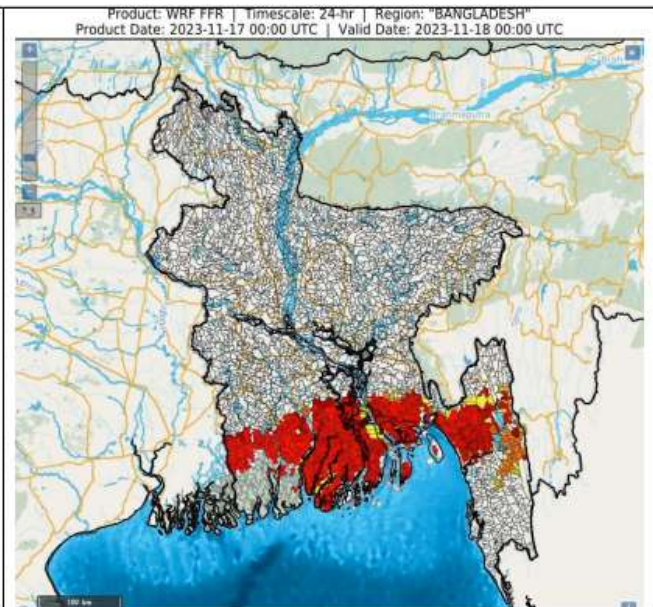
Surface runoff/ Inundation may occur at some fully saturated soils & low-lying areas over AoC as shown in map due to expected rainfall occurrence in next 24 hours.




24 hours Flash Flood Risk Outlook till 00 UTC of 18.11.2023:


Moderate flash flood risk likely over few watersheds & neighbourhoods of Southern parts of Bangladesh for next 24 hours.

Surface runoff/ Inundation may occur at some fully saturated soils & low-lying areas over AoC as shown in map due to expected rainfall occurrence in next 24 hours.



Flash Flood Risk

 **High Risk (Take Action)**

 **Moderate Risk (Be Prepared)**

 **Low Risk (Be Updated)**

Fishermen warning graphics

Day 1: 17.11.2023/11:30AM to 18.11.2023/05:30AM



Day 2: 18.11.2023/05:30AM to 19.11.2023/05:30AM



Day 3: 19.11.2023/05:30AM to 20.11.2023/05:30AM



Day 4: 20.11.2023/05:30AM to 21.11.2023/05:30AM



Day 5: 21.11.2023/05:30AM to 22.11.2023/05:30AM



Squally WX with wind speed 40-45 kmph gusting to 55 kmph

Squally WX with wind speed 45-55 kmph gusting to 65 kmph

Squally wind with speed 50-60 kmph gusting to 70 kmph

CS with Gale wind speed 60-90 kmph gusting to 110 kmph

Fishermen are advised not to venture into the marked areas.